



# GAT MONTHLY MEMBERSHIP PROGRESS REPORT

Results as of: 12/31/2021

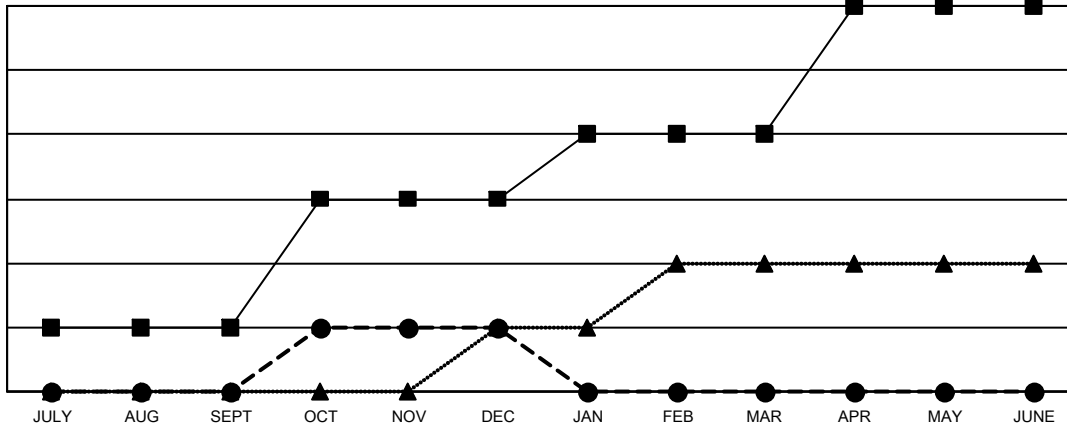
Multiple District 16

LOCATION: NEW JERSEY

Clubs			
RESULTS FOR 2021-2022			
QUARTER	NEW CLUB GOAL	NEW CLUBS	DROPPED CLUBS
JULY/AUG/SEPT	1	0	2
OCT/NOV/DEC	2	1	3
JAN/FEB/MAR	1	0	0
APR/MAY/JUNE	2	0	0

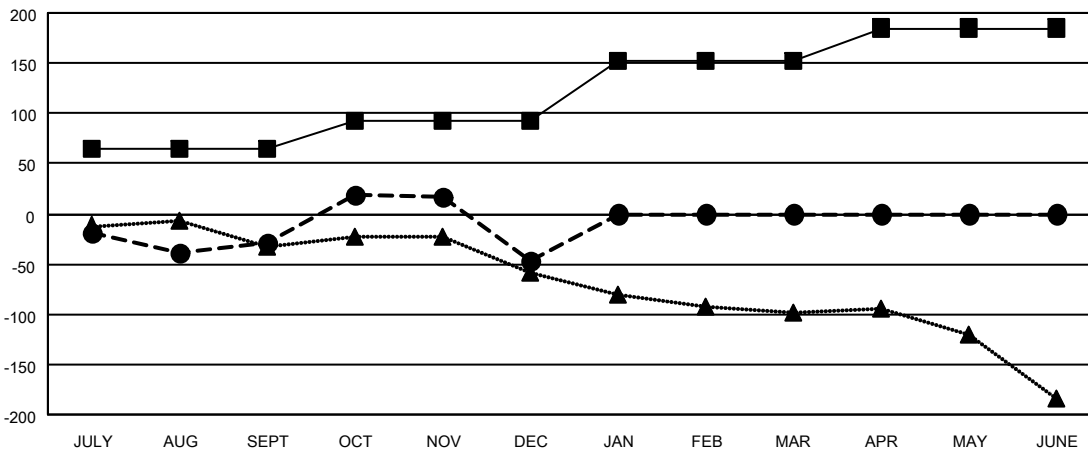
Members			
RESULTS FOR 2021-2022			
QUARTER	MEMBER GROWTH NET GOAL	MEMBER GROWTH ACTUAL	DROPPED MEMBERS ACTUAL (including transfers)
JULY/AUG/SEPT	65	97	112
OCT/NOV/DEC	28	106	122
JAN/FEB/MAR	60	0	0
APR/MAY/JUNE	32	0	0

GOALS AND ACTUAL NEW CLUBS CUMULATIVE



- - CURRENT YEAR GOALS FOR NEW CLUBS
- - CURRENT YEAR ACTUAL NEW CLUBS
- ▲ - LAST YEAR ACTUAL NEW CLUBS

GOALS AND ACTUAL MEMBERS CUMULATIVE



- - MEMBER GROWTH NET GOAL
- - MEMBER GROWTH ACTUAL
- ▲ - LAST YEAR MEMBERSHIP ACTUAL

<b>DROPPED CLUBS: 5</b>	50 CLUBS OF 172 ADDED 1 OR MORE NEW MEMBERS	<b>GENDER DISTRIBUTION</b>	
<b>DROPPED MEMBERS</b>		MALE	2,648 (65.58%)
DECEASED	18	FEMALE	1,379 (34.15%)
CLUB CANCELLED	42	NON BINARY	0 (0.00%)
OTHER	174	PREFER NOT TO ANSWER	11 (0.27%)
<b>TOTAL</b>	<b>234</b>	<b>TOTAL FAMILY UNIT MEMBERS 721</b>	
	<a href="#">CLICK HERE FOR CUMULATIVE MEMBERSHIP DATA</a>	<b>FAMILY MEMBERS PAYING HALF DUES 376</b>	